

# Barcode Singles



terrapi  
n

## Barcode Fonts for PC Windows and Apple Mac

(barcodes for IBM AFP, Xerox Metacode/LCDS, Unix, AS400, SAP etc. also available)

### Overview

- Barcode fonts include automatic encoding software for ease of use (PC & MAC versions)
- Barcodes can be printed on any Windows or MAC compatible printer
- FREE Demo barcodes can be downloaded from [www.terrapiin.co.uk/downloads/Barcode\\_singles/setup.exe](http://www.terrapiin.co.uk/downloads/Barcode_singles/setup.exe)

### Product Features

Our barcodes in PC format are priced at £95 + VAT per barcode type & contain Human Readable characters (in some fonts). They also include add-ins for MS Access, Excel & Crystal Reports to enable automatic encoding within any of these applications, and an Active X DLL to build into your own applications.

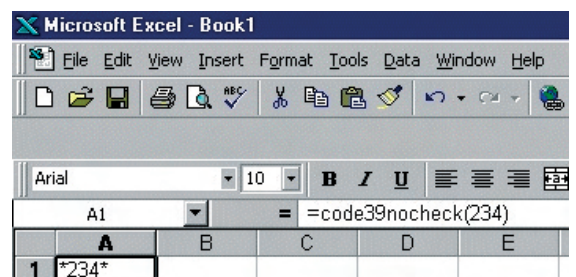
All our barcode fonts come with a 5 User License as standard, with various Multi-User Licenses available, up to an Unlimited User Site License for £995 + VAT.

We have barcodes available in the following 'soft' formats: TrueType (PC or Mac), Postscript (PC or Mac) & PCL. For mainframe environments (such as DOS, Unix & AS400), we can supply our barcodes on a chip as a 'printer plug-in' solution.

#### Excel Add-In

Our Excel Add-in provides easy method to use our barcode fonts in Microsoft Excel. Once our Add-in is installed you will find extra formula functions available to use.

Example of Excel Add-in with Code39 formula being used



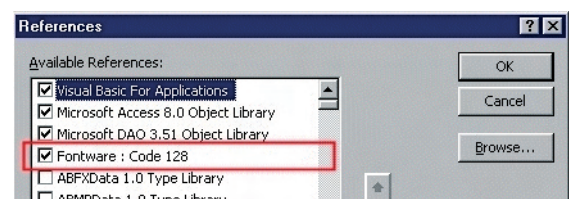
#### ActiveX DLL Barcode Functions

Our DLL allows you to use our barcode font within your own applications.

The DLL provides you with barcode functions which are available to use within programming applications such as Visual Basic and C++.

The barcode functions take all the hard work out of encoding and deploying our barcode fonts with in your computer systems.

The ActiveX DLL enabled in your application



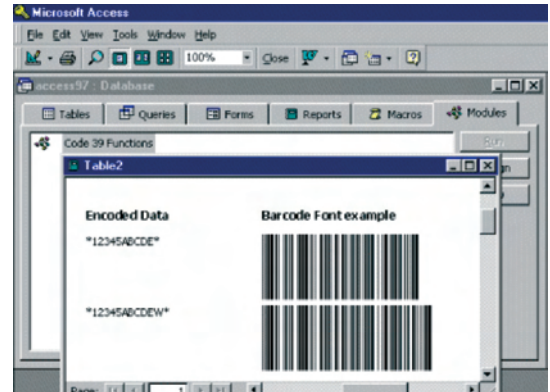


# Barcode Singles

## Microsoft Access Module

Allows easy integration of our barcode fonts with your Microsoft Access applications.

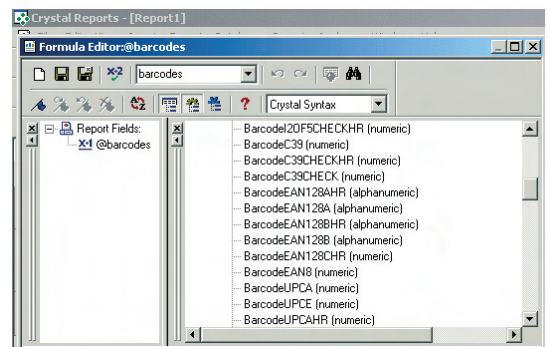
Example of Microsoft Access using Barcode Module encoding Code 39



## Crystal Reports User Function Library

Our DLL allows you to use barcode fonts within Crystal Reports. The barcode functions take all the hard work out of encoding and deploying our barcode fonts with in your computer systems.

The Terrapin Barcode User Function Library in use in Crystal Reports

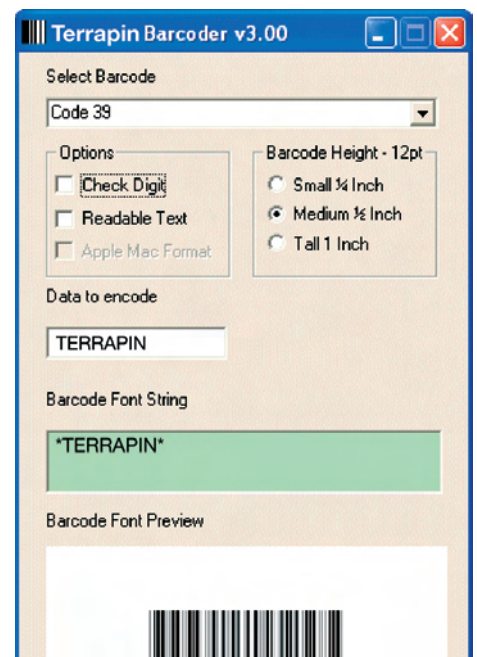


## Windows & MAC Barcode Utility

This Windows utility allows you to enter manually data and configure to encoded for certain barcode font that you wish to use.

The program allows you to turn check digits on or off, specify human readable text and extra features such as extended control characters.

Terrapin Barcode program encoding Code 39



terrapi